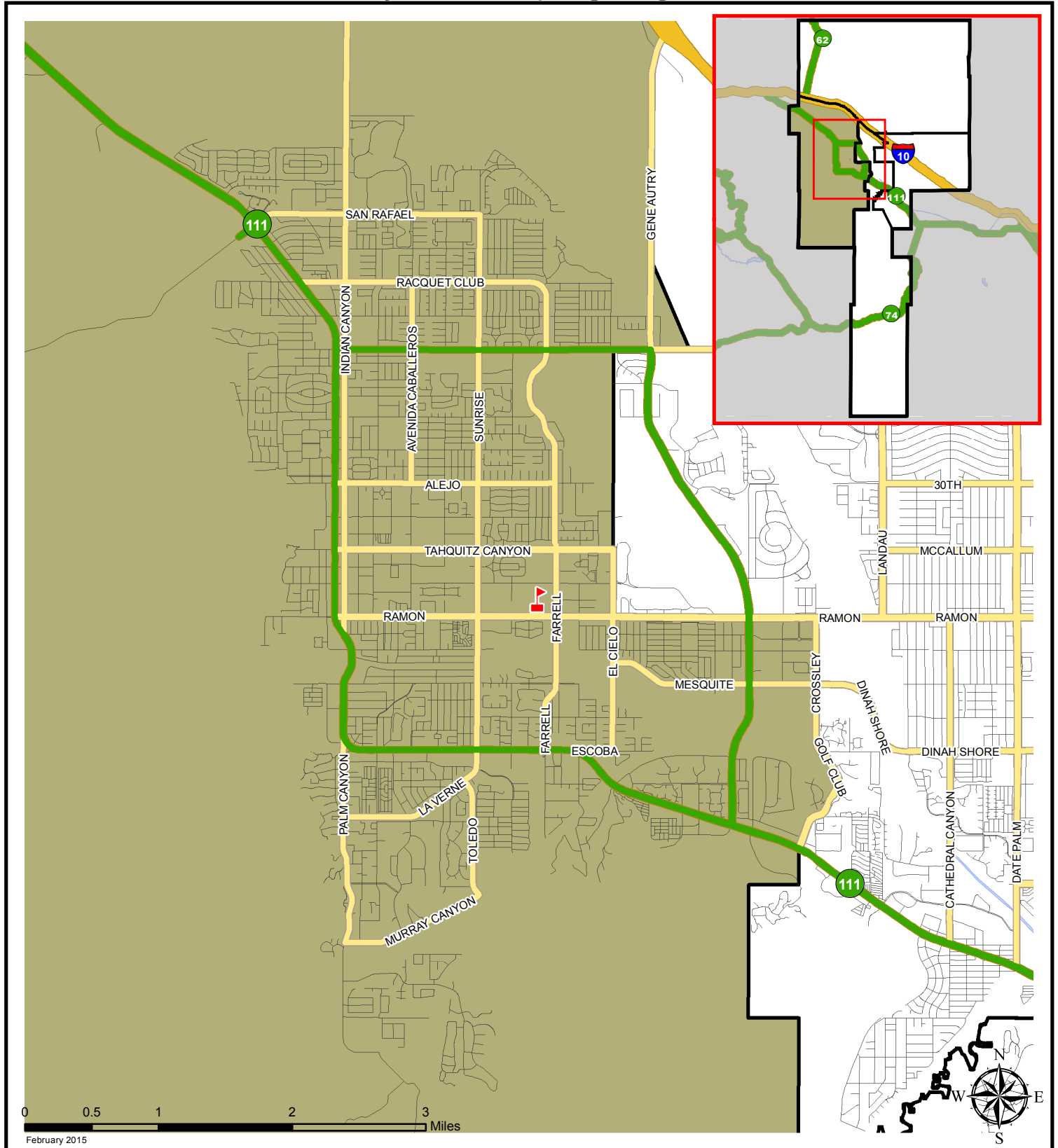


Palm Springs Unified School District

Current Attendance Boundary of Palm Springs High School



Boundary Description:

The region bounded and described as follows: Beginning at the intersection of Interstate 10 and the western boundary line of the School District running south and east along Interstate 10 to its intersection with Gene Autry Trail; then south along Gene Autry Trail to the Whitewater River Wash; then southeast diagonally through the Whitewater River Wash to Vista Chino; then east on Vista Chino to its intersection with a line extending north from El Cielo Road; then south on such line and El Cielo Road to its intersection with Ramon Road; then east on Ramon Road to its intersection with Crossley Road; then south on Crossley Road to its intersection with the northwest corner of parcel 681-300-004; then south along parcel lines to the southeast corner of parcel 681-480-004; then west along parcel lines to the southwest corner of parcel 681-480-001; then south along parcels lines to the southwest corner of 687-020-009; then east along parcel lines to the northwest corner of parcel 686-130-009; then south along parcel lines to the southwest corner of parcel 686-120-003; then to a point directly south on the northern edge of parcel 686-120-005; then west along parcel lines to the southwest corner of parcel 686-120-002; then south along parcel lines to the southwest corner of parcel 686-320-013; then west and north along the exterior boundary of the School District to the point of origin.